

## Census 2027 Tentative Timelines



## Key Preparations:

**Training**  
Three tiered training will be conducted to train an approximate 35 lakh enumerators, supervisors and other Census functionaries.

**Media Outreach**  
A focused publicity campaign using traditional and social media for nationwide awareness and participation.



Office of the Registrar General & Census Commissioner of India  
Ministry of Home Affairs  
Government of India



- @CensusIndia2027
- @CensusIndia2027
- @CensusIndia2027
- @CensusIndia2027

[www.censusindia.gov.in](http://www.censusindia.gov.in)



जनगणना से जन कल्याण

# CENSUS OF INDIA भारत की जनगणना

# 2027



## Census Overview

Population Census is a Union subject (Article 246) in India and is listed at serial number 89 of the Seventh Schedule of the Constitution. The Census Act, 1948, and the Census Rules, 1980, as amended from time to time, form the legal basis for the conduct of the Census in India. The term "Census" is commonly understood as "Population Census." The Census of India is the largest nationwide administrative exercise to collect complete and comprehensive data on population, housing, and socio-economic indicators.

India has a longstanding tradition of conducting regular decennial Population Censuses since 1872. The most recent Census was conducted in 2011, while the Census scheduled for 2021 was postponed due to the outbreak of the COVID-19 pandemic. Census 2027 will mark the 18th Census in the continuous series since 1872 and the 8th Census since independence, marking a crucial step in data-driven governance and inclusive development. The intent to conduct the Population Census in India was notified in the Gazette of India on 18th June 2025 by the Central Government.

## Journey So Far



## Phases of Census:

**Phase I: Houselisting & Housing Census**  
(To be conducted in a 30-day continuous period as chosen by the States/UTs between April - September 2026)  
Source of data on Housing Conditions, Amenities and Assets



**Phase II: Population Enumeration**

(To be conducted during February 2027 across India. For the UT of Ladakh and snow-bound non-synchronous areas of the UT of J&K and the States of Himachal Pradesh and Uttarakhand, to be conducted during September 2026)  
Source of data on Demographic Characteristics, Literacy, Workers Migration and Fertility



## Special Features of Census 2027



### Data Security & Privacy:

Highest standards of data protection will be ensured by giving special attention to cyber security protocols and encryption mechanisms to protect data integrity and avoid any kind of data breach.



## What Data is collected?

### HOUSING CONDITIONS

Granular data on housing conditions, amenities available, assets possessed by households, etc.

### DEMOGRAPHICS

Age and sex, marital status, fertility, relationship, household size, etc.

### SOCIO-ECONOMIC INDICATORS

Education, economic activity, migration and place of birth, etc.

### SOCIAL & CULTURAL CHARACTERISTICS

Religion, language/mother tongue, disability status, etc.

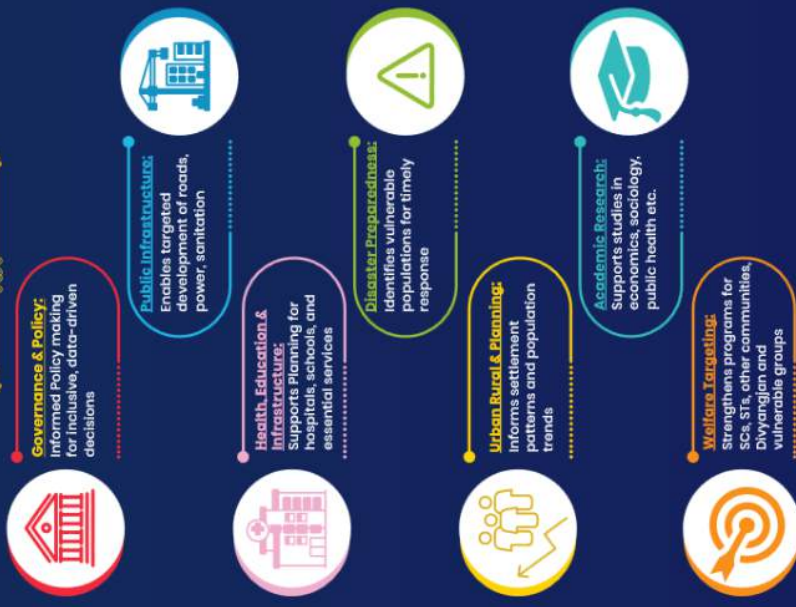
### CASTE ENUMERATION

Caste of all individuals of the Nation will be collected.

### DISTRICT CENSUS HANDBOOK

Village/Town infrastructure & civic facilities, Comprehensive demographic, social, and economic information of all districts.

## Why Census Matters?



# Self-Enumeration Flow Chart



## SECTION 1: ACCESS AND INITIAL REGISTRATION

### Portal Access & Login

1

Visit <https://se.census.gov.in>, select State/UT, enter Captcha.

2

### Household Registration

Enter Head of Household Name, 10-digit Mobile Number, Email Id (Optional)



**Name of Head of Household** can not be changed later



**Only one Mobile Number** should be used per household; once registered, the same cannot be used for any other household.

## SECTION 2: VERIFICATION AND LOCATION IDENTIFICATION



3

### Language & OTP Verification

Select preferred language and enter OTP sent to registered mobile number.



Selected Language cannot be changed later

4

### Provide Location Details

Select District and enter PIN, Village/Town/Locality.

5

### Locate Your Residence on Map

Drag the Red Marker on the map to identify your exact residential building and confirm location.

## SECTION 3: DATA ENTRY AND FINAL SUBMISSION

6

### Complete the Questionnaire

Fill in the Houselisting and Housing Census Questionnaire guided by Tooltips, FAQs and "Essential Information" notes.

7

### Preview and Review

Use the Preview Screen to check all entered data; you can edit entries, save a draft to submit later, or submit finally.

8

### Final Submission

Click "Final Submit" to lock your data; no changes can be made after Final Submission

### GENERATION OF THE SE ID

Upon submission, a unique 11-digit SE ID (prefixed with "H") is generated and sent via SMS & Email (if provided)

## SECTION 4: FIELD VALIDATION



9

### Enumerator Visit

When a Census Enumerator visits your home, share your SE ID with her/him.

### ID Matching Outcomes

If SE ID matches with an existing record, details are confirmed and submitted; if not, Enumerator will collect data afresh.